

What's new in ZW3D2011SP2

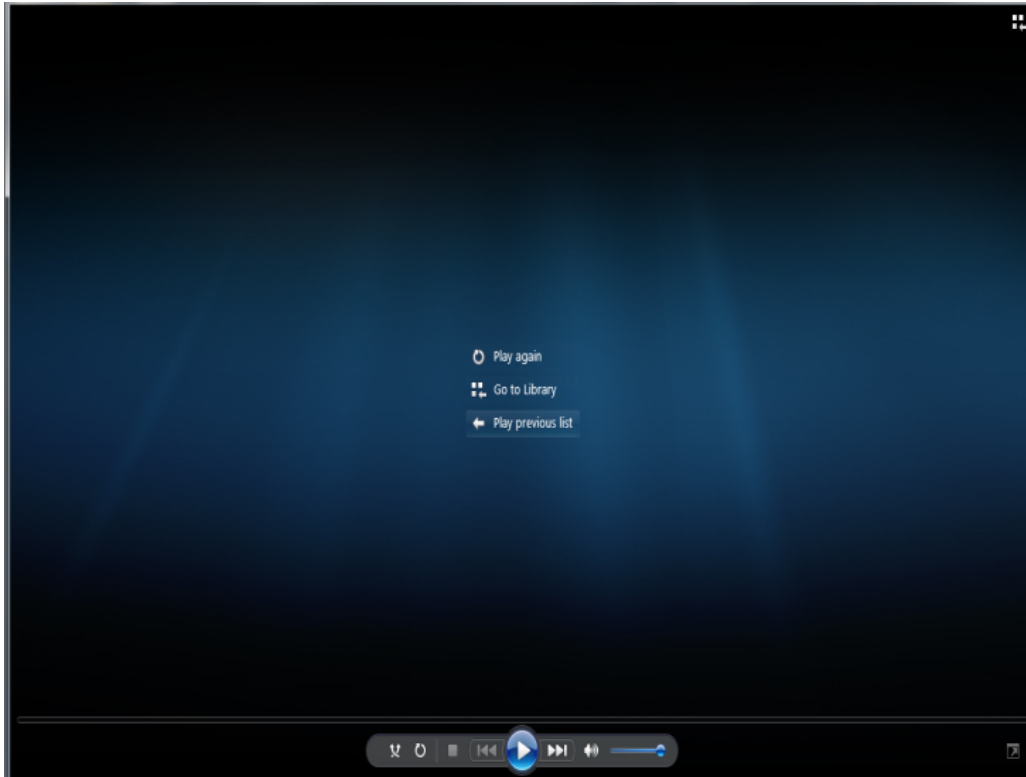
- 1. Faster displaying speed
- 2. New file management
- 3. Enhancements in importing IGS data
- 4. Enhancements in CAD
- 5. Enhancements in CAM

Faster displaying speed

Big speed up on Display, 12X faster than SP1 when redrawing In shaded mode with edges displayed:

- 1) When 'Display edges' and 'use shaded edge color setting' are checked, Redraw speed of shape mode has been increased about 12 times
- 2) If both of 'Display edges' and 'use shaded edge color setting' are unchecked, Redraw speed of shape mode has been increased 4 to 5 times
- 3) Redraw speed of Hidden Line mode has been increased more than 3 times
- 4) Redraw speed of Wireframe mode is more than 2 times faster than before
- 5) Redraw speed of Analyze mode has been increased about 50%
- 6) Operations related with display has been increased 40%~50%, such as zoom, blank\Unblank and Revolve

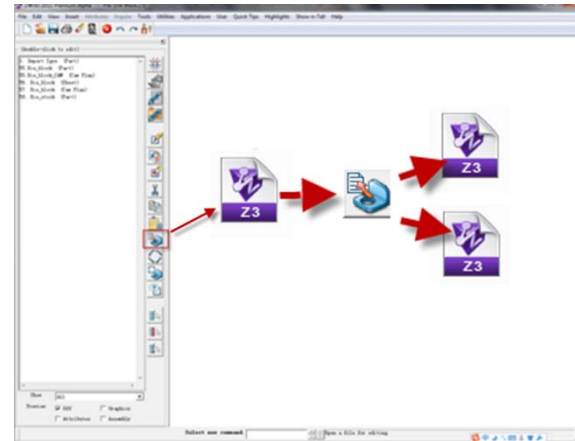
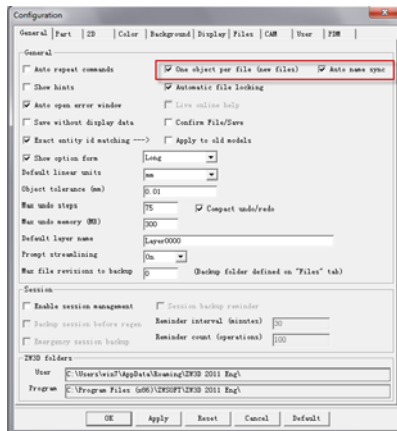
Displaying speed comparison



<http://download1.zwsoft.com/zw3d/tech/UL260iHelicopterEngine.rar>

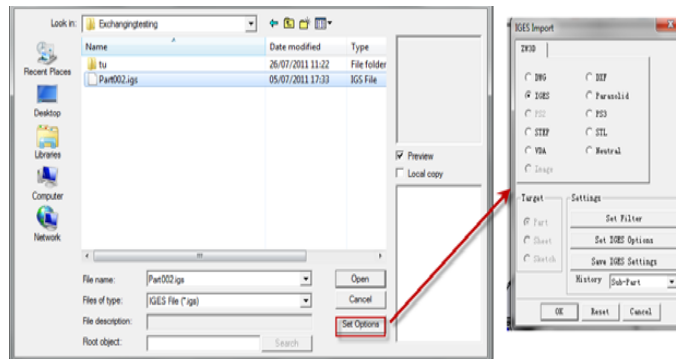
New file management

- 1.Enhance “one object per file” function to provide a compatible file management.
- 2.Separate selected objects within a Z3 file into different individual files



Enhancements in importing IGS date

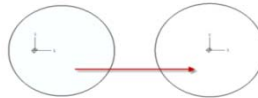
- 1. New option to customize import in Open form



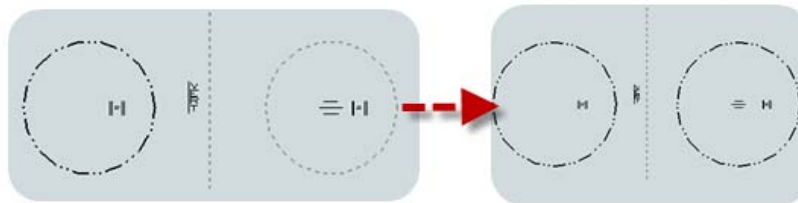
- 2. Fixed the import failure when the imported file name is longer than 64 bytes
- 3. Improve IGES Import function to eliminate duplicate geometry

Enhancements in CAD

- Sketch
- 1.Auto placement of dimension and User Text are ignored
- 2. Fixed the wrong central point as the part face used as a sketch datum

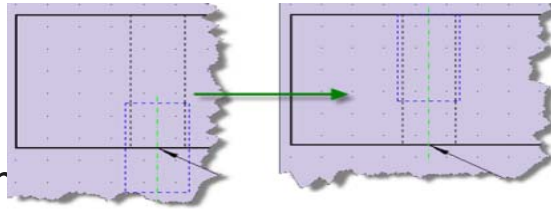


- 3. Fixed Redefine last failing on Sketch issue
- 4. Fixed the unexpected auto type toggling on mirroring a non-solid line



Enhancements in CAD

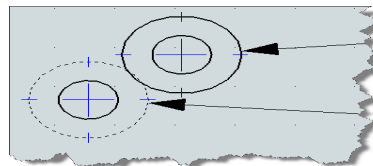
- Drawing sheet
- 1. Fixed the loss of top view when hole callout going wrong
- 2. Improve the display of center lines and cosmetic threads in drafting



- 3. Dimension improver

1) Improved hole dimensions

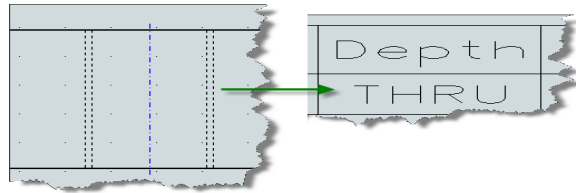
- a) Improve hole table balloon to make leader lines to point at outmost edge and orient along radial line



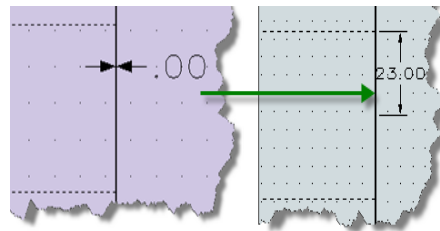
Enhancements in CAD

- Drawing sheet

b) Fixed the display issue of the depth of the through hole



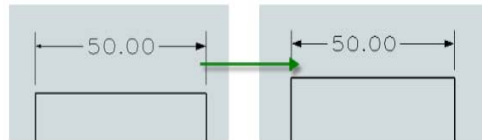
2) Fixed the wrong display issue on radius of a removed cylinder in sheet



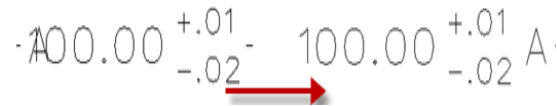
Enhancements in CAD

- Drawing sheet

3) Fixed the asymmetric arrow attribute in linear dimension after modification in leader dimension

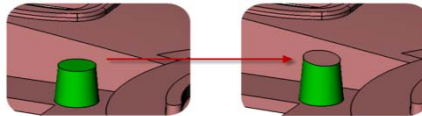


4) Fixed Appended Text overlapping a dimension that has tolerance



Enhancements in CAD

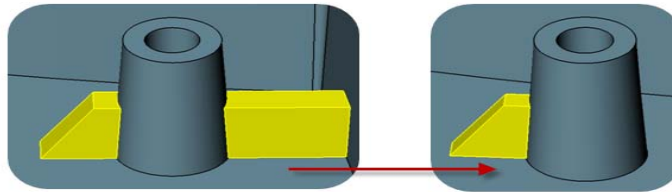
- Modeling
- 1. Improve Replace command to support more cases



- 2. Fixed a crash when Smooth via FEM handling a specific large number of faces
- 3. Fixed invisible entities illegally shown issue during inner sewing
- 4. Fixed a crash when sweep running under the condition of the Z-spine option being set up to parallel in advance option

Enhancements in CAD

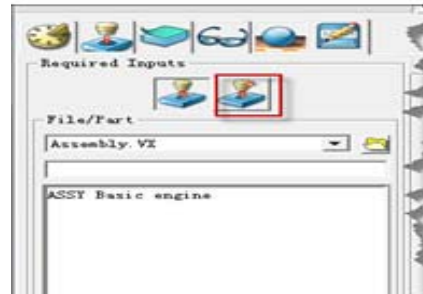
- Modeling
- 5. Fixed the failure on Rib running on a cylinder



- 6. Improve Hole command
- 7. Fixed the failure on mirroring component in single object mode

Enhancements in CAD

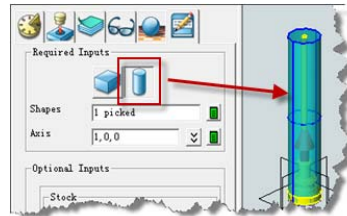
- Assembly
- 1. Create a new component on fly to insert and to start editing



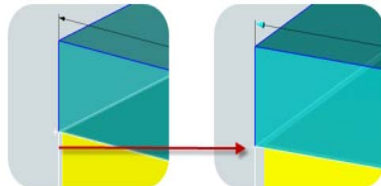
- 2.Fixed the hole that new object is added into single object file when inserting component
- 3.Support surface as an orient frame when insert a component

Enhancements in CAD

- Mold & Die
- 1. Add a new command to make cylindrical stock

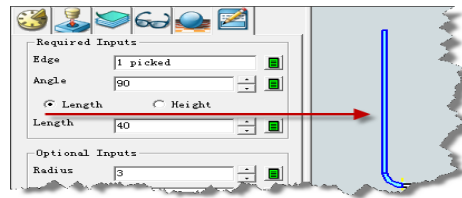


- 2. Improve the input behavior in X,Y,Z field of Stock command
- 3. Fixed the round-upped origin being away from the edges

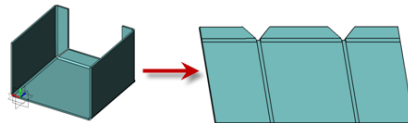


Enhancements in CAD

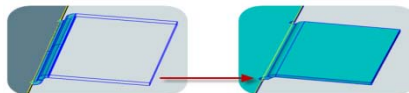
- Sheet metal
- 1. New height option to control the size of a flange



- 2. Improve unfold function to support more imported model

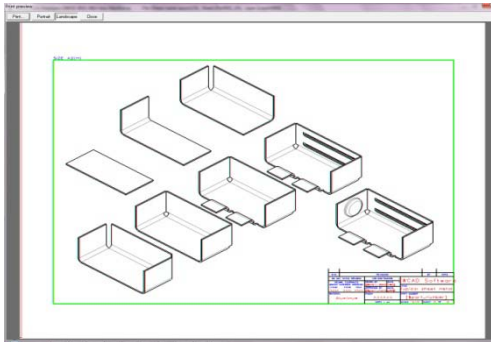


- 3. Improve real-time preview in sheet metal

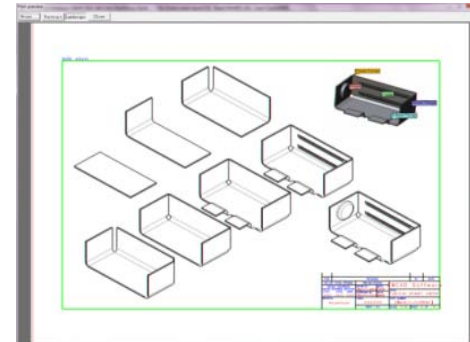


Enhancements in CAD

- Sheet metal
- 4. Fixed the persistent label on multiple edges flange
- Print
- 1. Fixed the inserted image missing issue when previewing and printing a drawing sheet with a image



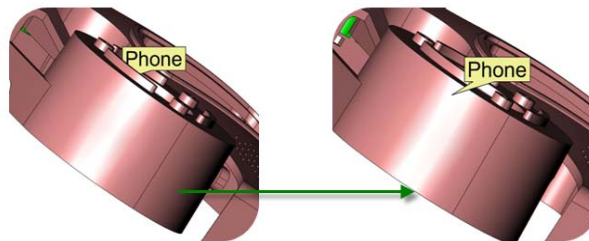
ZW3D2011SP1



ZW3D2011SP2

Enhancements in CAD

- Print
- 2.Fixed the problem that the black line can't be previewed and printed in the shaded mode
- 3.Fixed the problem that the marking icon being sheltered by the part when previewing

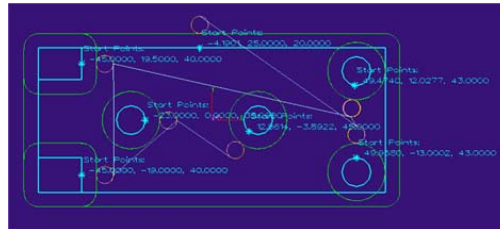


Enhancements in CAM

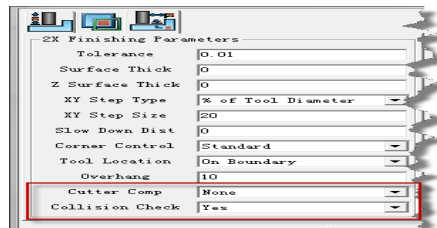
- CAM
- 1. Support Cylindrical Stock in CAM



- 2. Support customized "Start Points" in Z-level operation

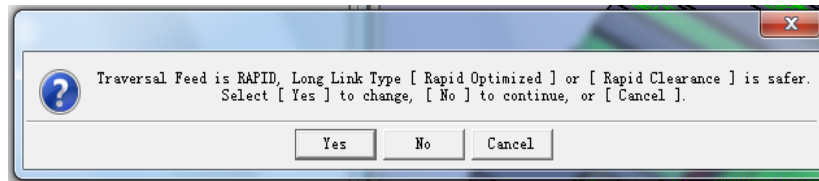


- 3. New combo box to some options in Mill3 tactic



Enhancements in CAM

- CAM
- 4. New warnings and options to users to make sure a safer Speed/Feeds being used



- 5. Fixed the compatibility with IE 9 when output the XML file
- 6. Performance speed up in 5-axis operation tool path calculation
- 7. Fixed the issue that steps defined in different ways had different tool paths
- 8. Support to customize the name of the exported config file

Miscellaneous

- Enhance F6 to scroll through up to 10 alternative picks
- Support to activate ZW3D without administrator privilege
- Enable to start multiple ZW3Ds through double clicking icon
- Fixed the wrong image preview in 3D Paste command

Thanks