



wtek
when safety matters

SAFETY AND HSSE

Frank Wehus, Wtek

Started as a development company - Creation.

2003 Established the 1st of January.

2006 Australian office open 2006



Wtek are represented in EU, Asia, Australia and Middle East.



WATCHERSERIES is a reliable safety system for personnel, vehicles and goods.



TRAILBLAZER is a middleware between hardware, databases and WATCHERSERIES

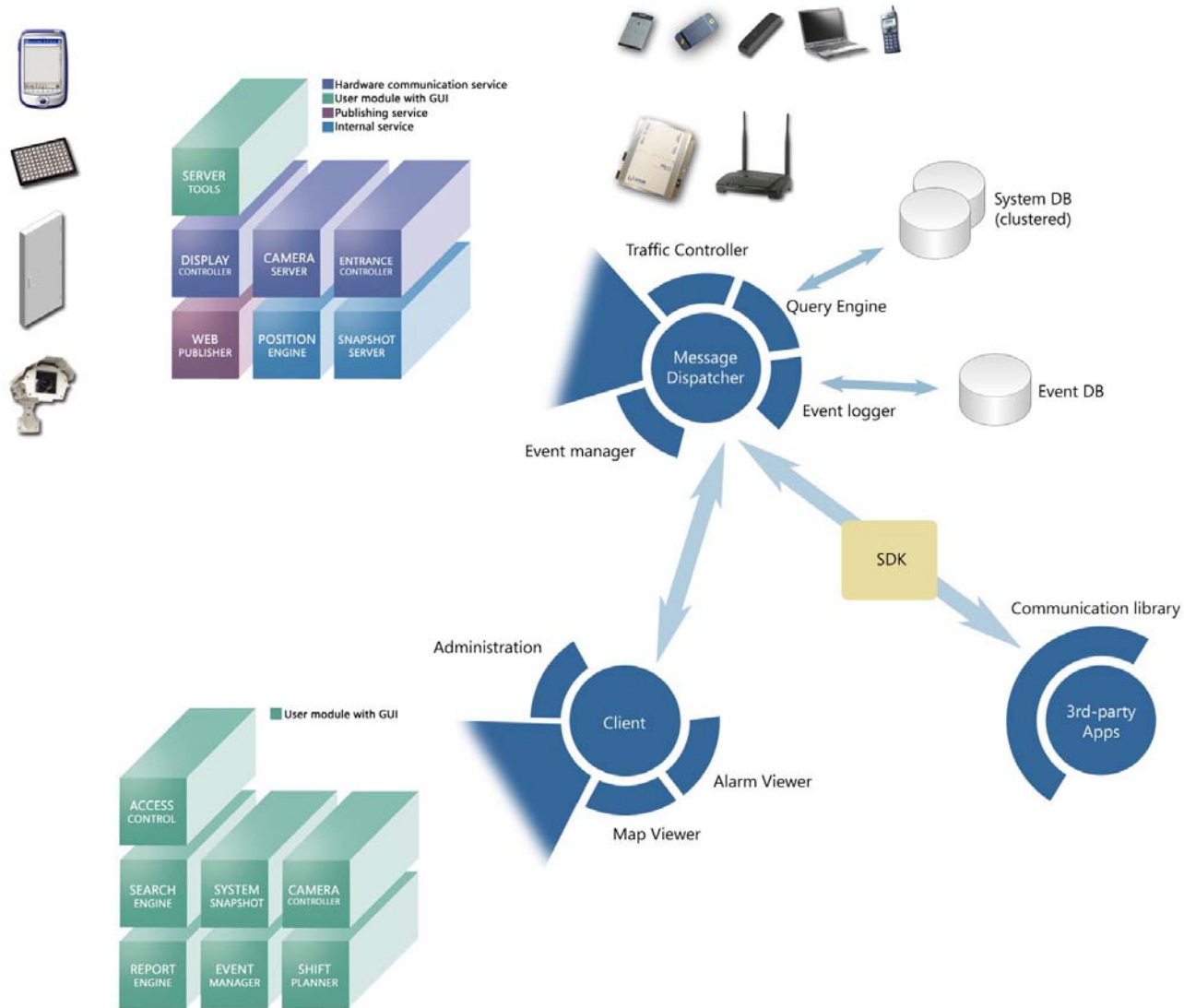
WATCHERSYSTEM

WATCHERSYSTEM is developed to handle safety, logistics and administration.



Wtek AS are a system development company with main focus on safety, and extensive knowledge within wireless data acquisition as RFID, IEEE802.x, UHF, VHF etc.

SYSTEM OVERVIEW



Time Difference Of Arrival (TDOA)

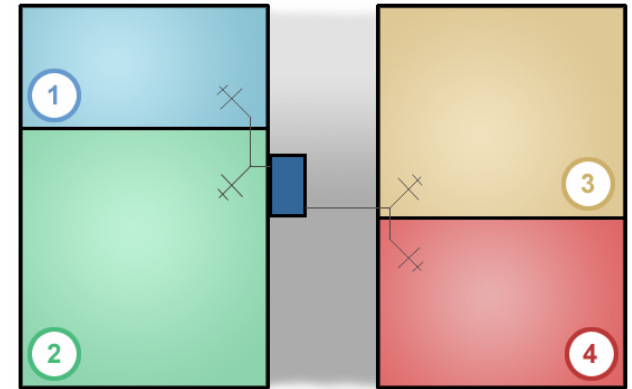
Received Signal Strength Indication (RSSI)

Techniques

- Triangulation

- System tuning

- Masking (Intelligence)



3-20m accuracy (product of technique and equipment accuracy)

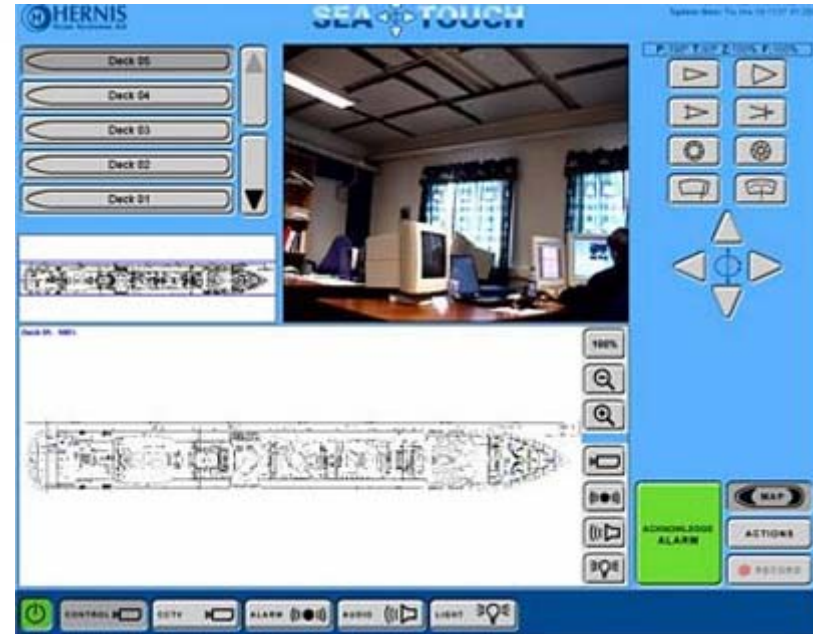
Refresh rate: 5 sec - 30 min

Zone accuracy = Half the zone length (guaranteed, and in realtime)

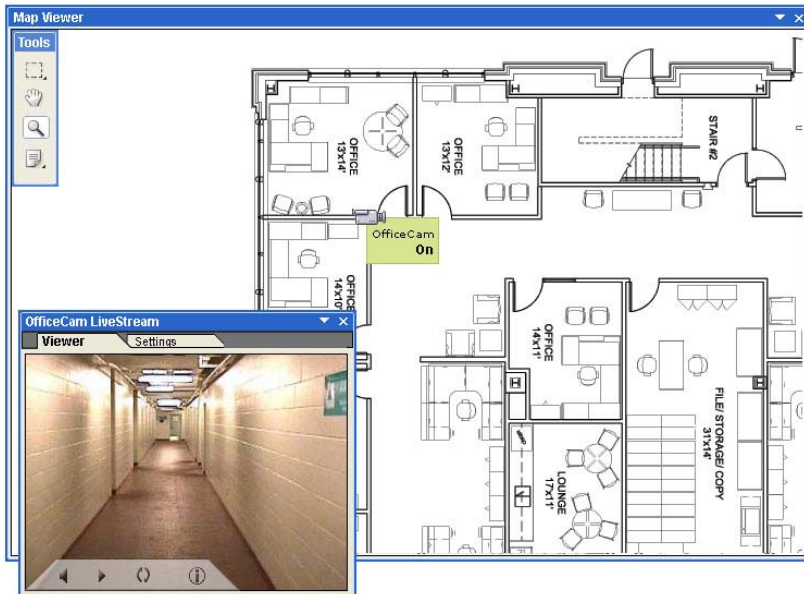
The best of both worlds

LOCATE

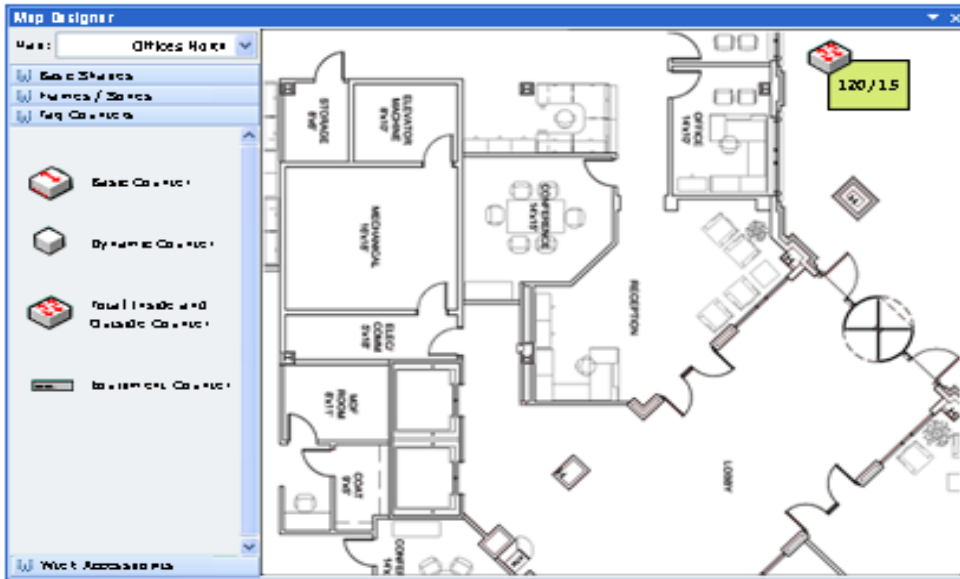
- Search for objects realtime
- Follow one or more objects
- Locate within zone or pinpoint with accuracy



- Use CCTV to get visual informatoin of process or area
- Locate and do events based recources in area

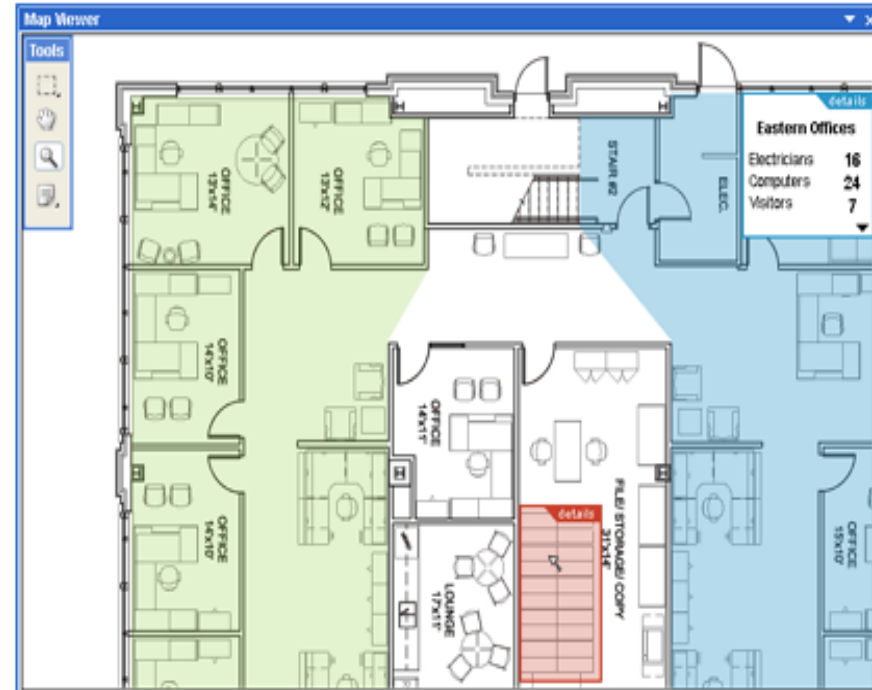


MAP SYSTEM



- Import map
- Build overview with object tool
- Define criteria on objects
- Use layers to select detail level
- Set zone preferences
- Set index map
- Chosed detail mail level

- Interact with objects on map
- Zoom into area of interest
- Fast overview of information
- From overview to detailed information



HARSH ENVIRONMENT

- High quality products
- EX certified equipment
- Highly qualified personnel
- Development of hardware and software
- ISO approvals
- LAB og test environments

ATEX



"There are more to consider than technology"

EkoFISK

- When safety matters.
- Integration.
 - PA System
 - Control system
 - DaWinci
 - Gaz sensores



Through use of Personnel transponders, all personnel shall be tracked as they pass through main gates or arrive at muster stations. This enables to obtain control over all personnel in less than 25 minutes IF an emergency situation occurs.

” The challenge is more than making the hardware work ”

- Environmental.
- Customer routine.
- Introduction and understanding end users.
- Making everyone feel safe.
- Implement to external systems.
- Training.
- Training with the usage of the system in field.
- Maintenance and administration of the system.
- Support.
- Logistics and assetmanagement.
- Maintenance and sensor technology.
- Spareparts.
- Open plattform .

WatcherMINE at “SVEA”

- Implementation
 - 300 Persons equipped with tags
 - 4 Zone strategic established.
 - 2 Client stations for overview

Customer **BENEFITS**

- High accuracy system used in EX environment
- Information about personell and equipment
- Optimize safety



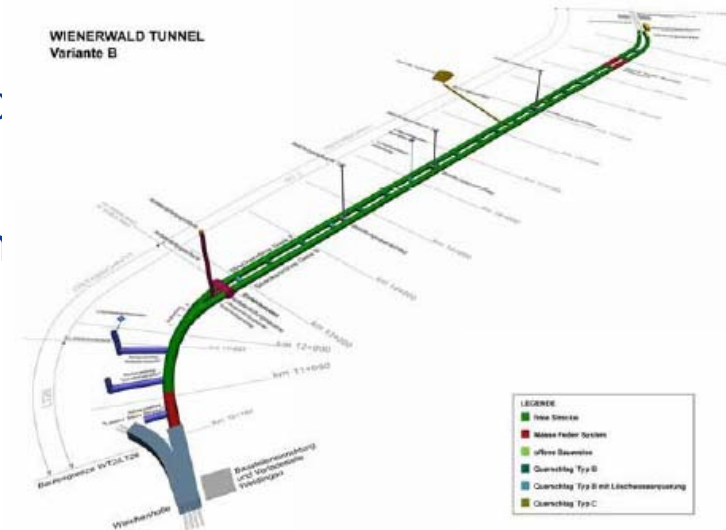
WatcherTUNNEL at “Wienerwald tunnel”

- Implementation
 - 400 Persons equipped with tags
 - 10 Zone.
 - 3 Client stations for overview



Customer **BENEFITS**

- non-contact “invisible and automatic access control
- Information about personell and equipment
- Optimize safety and logistics



WatcherMINE at “LKAB Malmberget”

- Implementation
 - 1200 Persons equipped with tags
 - 14 Zone. 350Km of roads.
 - 7 Client stations for overview
 - Usage of Display for information



Adobe Acrobat 7.0
Document

Customer **BENEFITS**

- Realtime knowledge of last seen position
- Used in rescue and production
- Optimize safety for the employees

DEMOSITE





wtek
when safety matters