

Output Module.



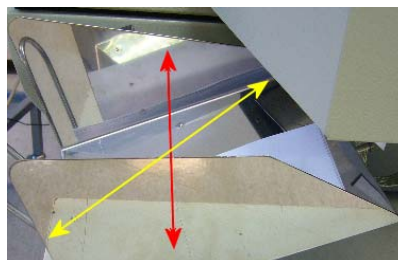
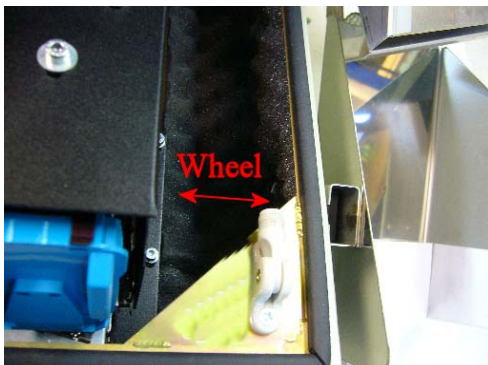
Depending on how many cheques you want to run in one batch, the output drawer can be moved up and down, and the angle can be adjusted as well.

All to archive best possible collection of the cheques.

If you only print 25, 50 or 100 in one batch before you remove the cheques, it is good to move the drawer upwards and a little skew downwards to achieve best possible collection of the cheques.

Open the main cover to locate the small hand wheel on right side.

By loosening this you can move the whole drawer up and down, and also adjust the angle of the unit.



Depending on the cheque length, you can also adjust cheque support.



Just take a firm grip and push or pull the support according to the cheque length.