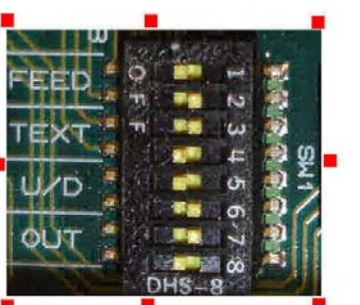


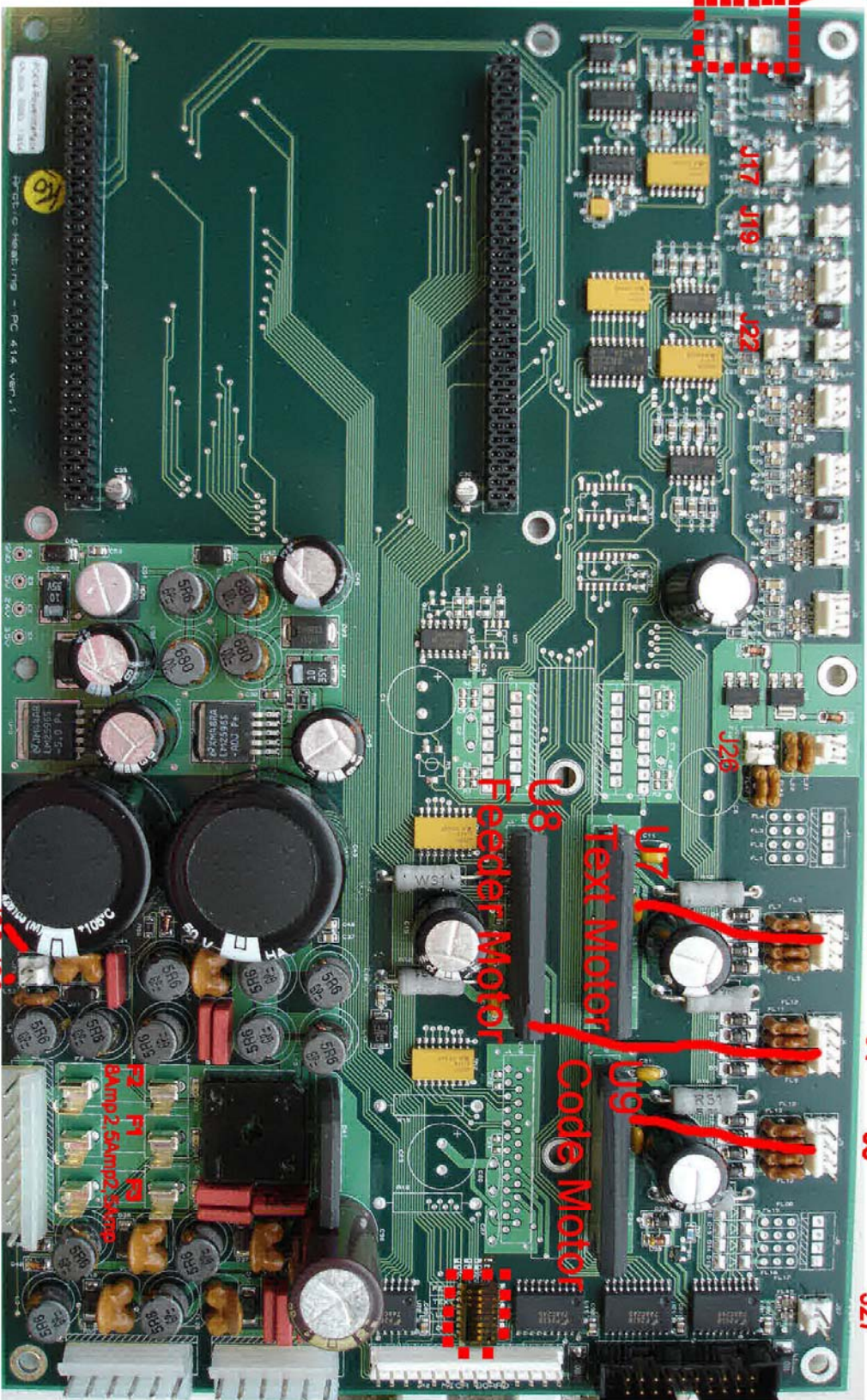


- J14 LED RED/GREEN
- J16 DOUBLE DETECTOR SENSOR RECEIVER
- J17 DOUBLE DETECTOR SENSOR TRANSMITTER
- J18 FEEDER SENSOR TRANSMITTER
- J19 FEEDER SENSOR RECEIVER
- J26 Fan Connector to CPU Board
- J21 CODE SENSOR TRANSMITTER
- J22 CODE SENSOR RECEIVER
- J23 TEXT SENSOR 1
- J24 TEXT SENSOR 2

- J25 OUTPUT SENSOR
- J2 SPARE SENSOR *(NOT)
- J7 OUTPUT MOTOR
- J3 TEXT MOTOR
- J4 FEEDER MOTOR
- J5 CODE MOTOR



2,3,6,7 = ON
1,4,5,8 = OFF



- J14
- J16
- J18
- J20
- J21
- J23
- J24
- J25
- J2
- J7
- J3
- J4
- J5
- J27

J17 J19

J22

J26

J8 Feeder Motor

J9 Text Motor

J10 Code Motor

- J10 TO PC 415
- J12 TO PC 408
- J11 TO PC 415
- J13 TO PC 408

- G 5 2 3
- N V 4 5
- D V V

- J28 J29 FAN
- J28 TO STAPLER

J15

F1 8Amp 2.5Ampz 5x20

PC-DC Heating - PC 414 ver. 1